

Minimal Pairs

Final Consonant Deletion

/d/

8 pairs

Minimal Pairs

Final Consonant Deletion

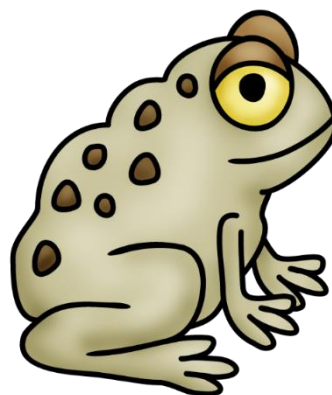
/d/

Note to SLP: Minimal pairs are accent dependent. You should decide which words will work for your student before beginning practice.



toe

Final Consonant Deletion /d/



toad

Final Consonant Deletion /d/



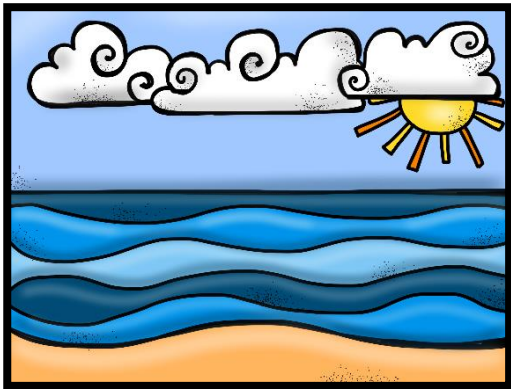
we

Final Consonant Deletion /d/



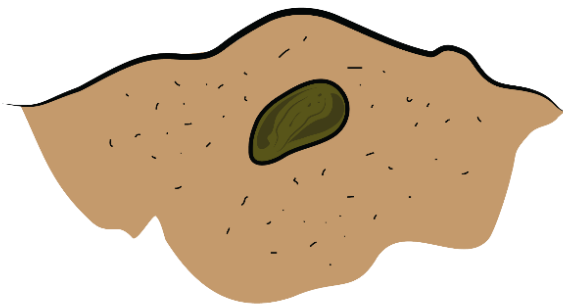
weed

Final Consonant Deletion /d/



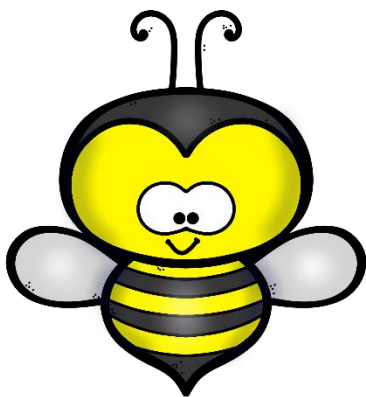
c

Final Consonant Deletion /d/



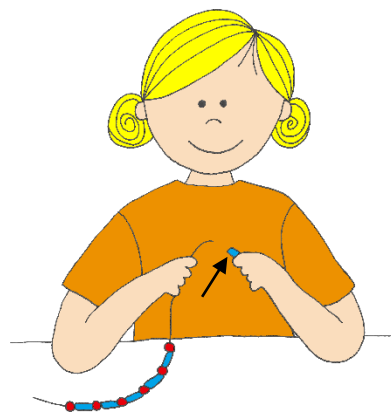
seed

Final Consonant Deletion /d/



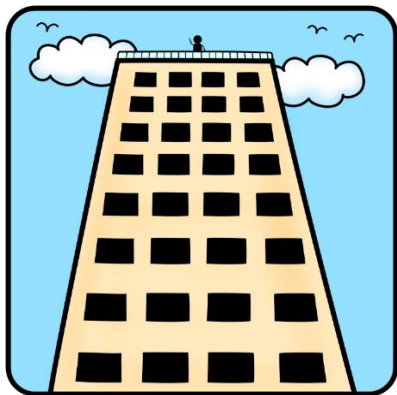
bee

Final Consonant Deletion /d/



bead

Final Consonant Deletion /d/



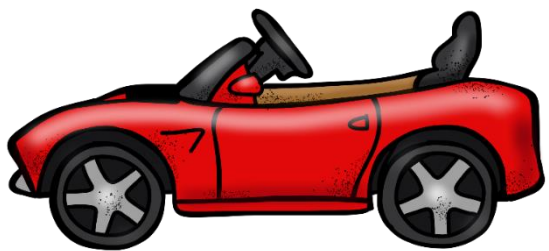
high

Final Consonant Deletion /d/



hide

Final Consonant Deletion /d/



car

Final Consonant Deletion /d/



card

Final Consonant Deletion /d/



sly

Final Consonant Deletion /d/



slide

Final Consonant Deletion /d/



Baa

baa

Final Consonant Deletion /d/



bad

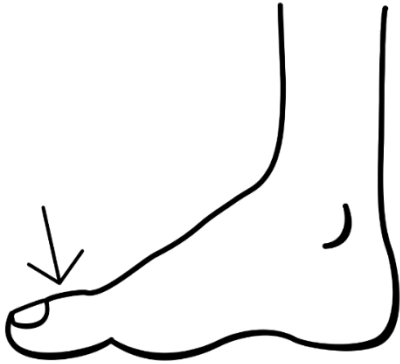
Final Consonant Deletion /d/

Minimal Pairs

Final Consonant Deletion

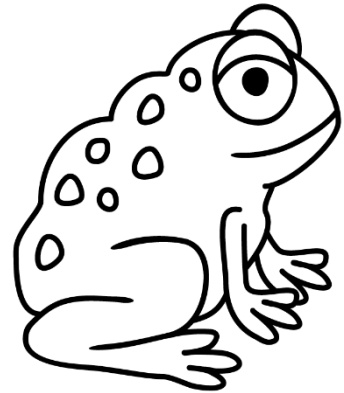
/d/

Note to SLP: Minimal pairs are accent dependent. You should decide which words will work for your student before beginning practice.



toe

Final Consonant Deletion /d/



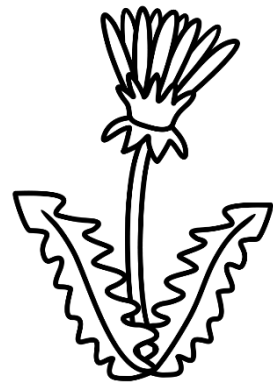
toad

Final Consonant Deletion /d/



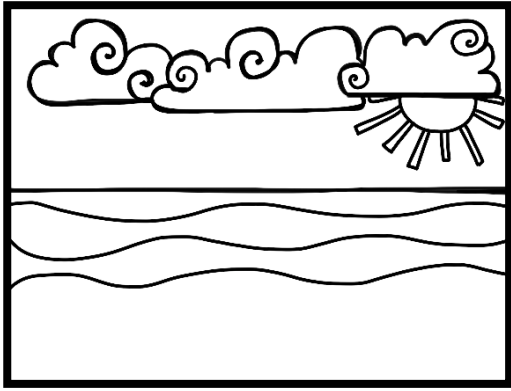
we

Final Consonant Deletion /d/



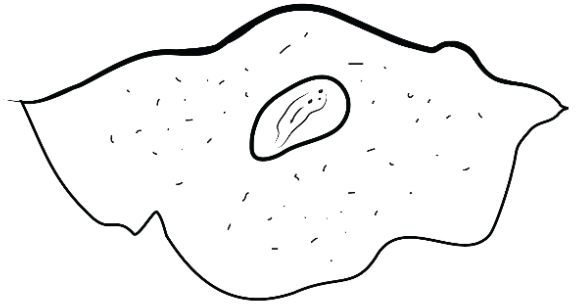
weed

Final Consonant Deletion /d/



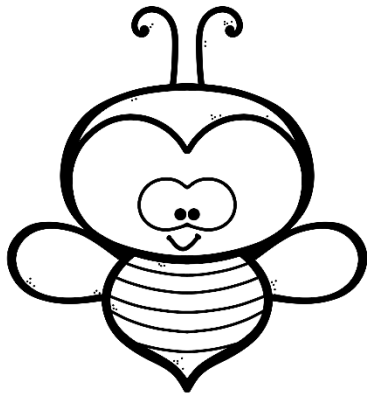
c

Final Consonant Deletion /d/



seed

Final Consonant Deletion /d/



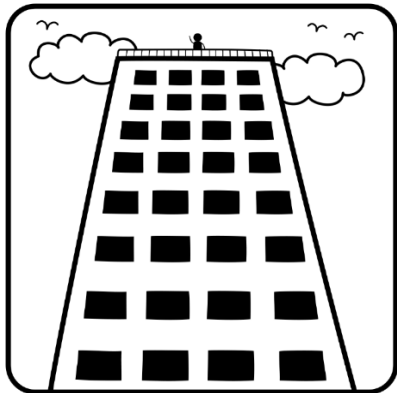
bee

Final Consonant Deletion /d/



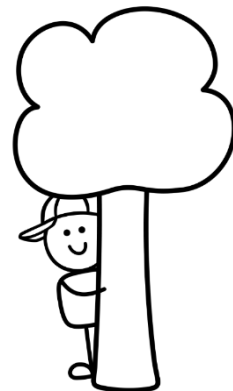
bead

Final Consonant Deletion /d/



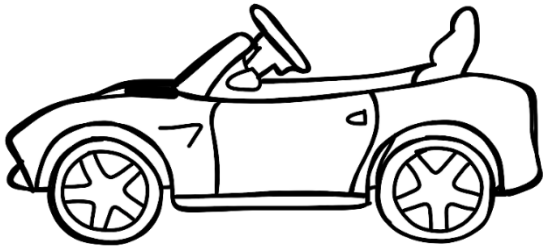
high

Final Consonant Deletion /d/



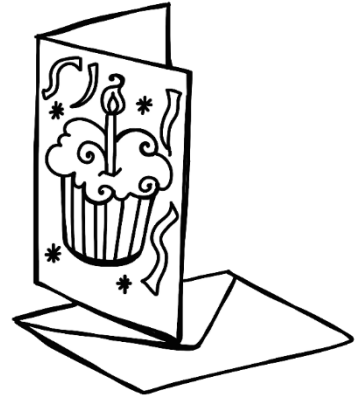
hide

Final Consonant Deletion /d/



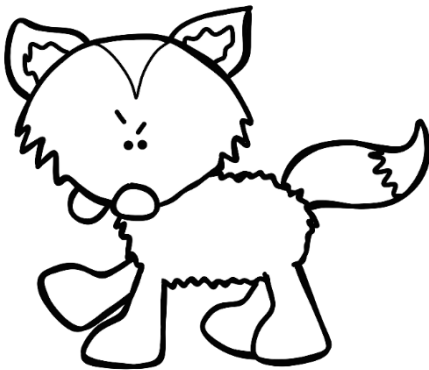
car

Final Consonant Deletion /d/



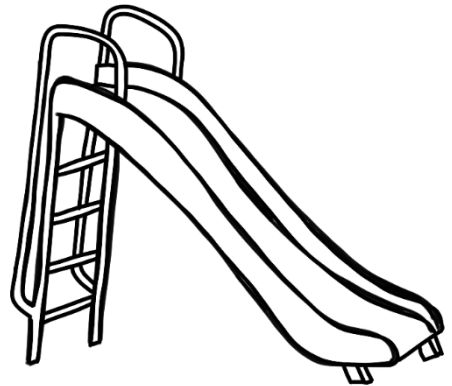
card

Final Consonant Deletion /d/



sly

Final Consonant Deletion /d/



slide

Final Consonant Deletion /d/



baa

Final Consonant Deletion /d/



bad

Final Consonant Deletion /d/