

# Minimal Pairs

## Final Consonant Deletion

/f/

8 pairs

# Minimal Pairs

## Final Consonant Deletion

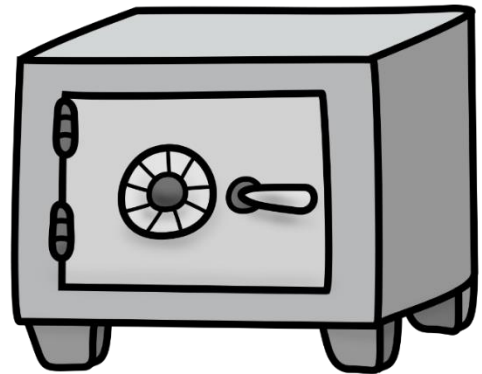
/f/

Note to SLP: Minimal pairs are accent dependent. You should decide which words will work for your student before beginning practice.



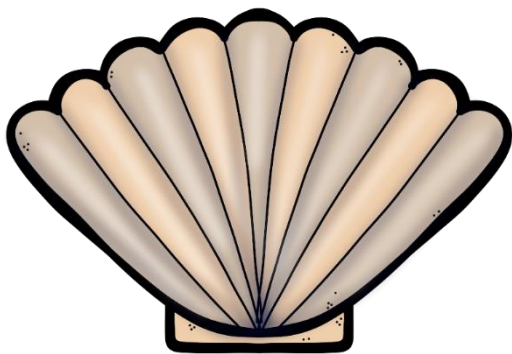
say

Final Consonant Deletion /f/



safe

Final Consonant Deletion /f/



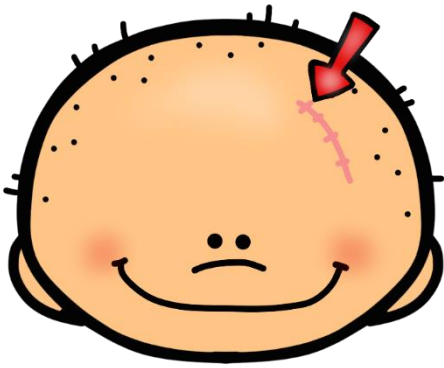
shell

Final Consonant Deletion /f/



shelf

Final Consonant Deletion /f/



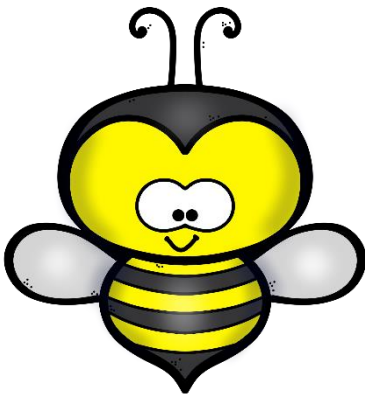
scar

Final Consonant Deletion /f/



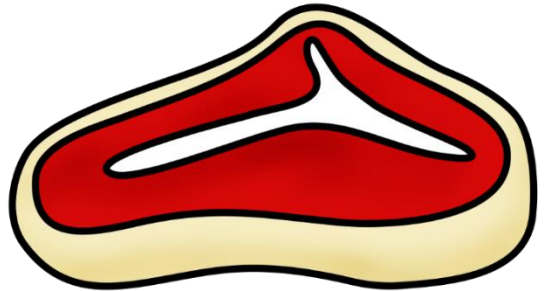
scarf

Final Consonant Deletion /f/



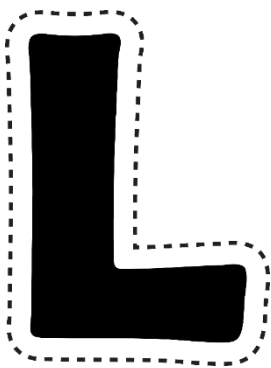
bee

Final Consonant Deletion /f/



beef

Final Consonant Deletion /f/



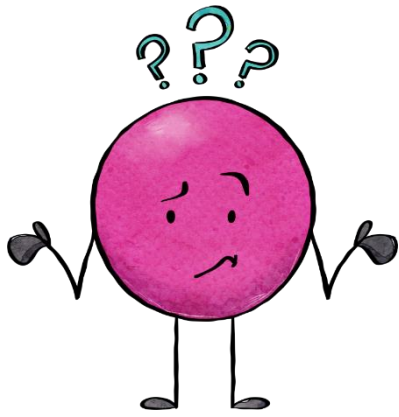
L

Final Consonant Deletion /f/



elf

Final Consonant Deletion /f/



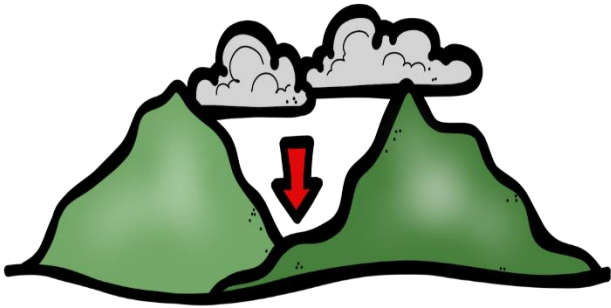
why

Final Consonant Deletion /f/



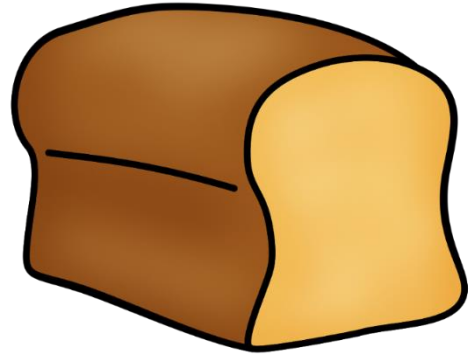
wife

Final Consonant Deletion /f/



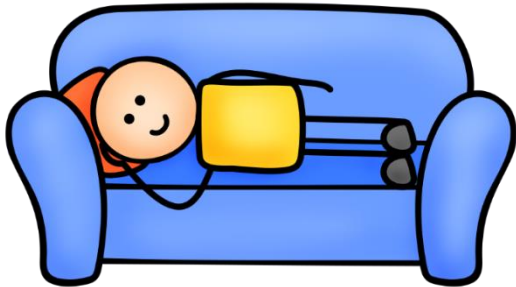
low

Final Consonant Deletion /f/



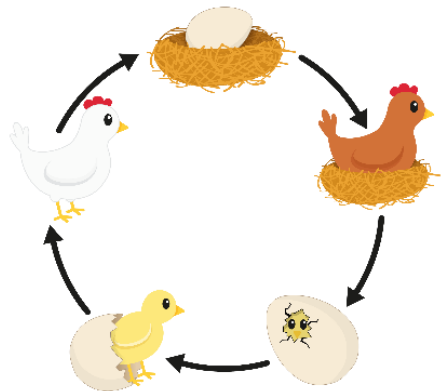
loaf

Final Consonant Deletion /f/



lie

Final Consonant Deletion /f/



life

Final Consonant Deletion /f/

# Minimal Pairs

## Final Consonant Deletion

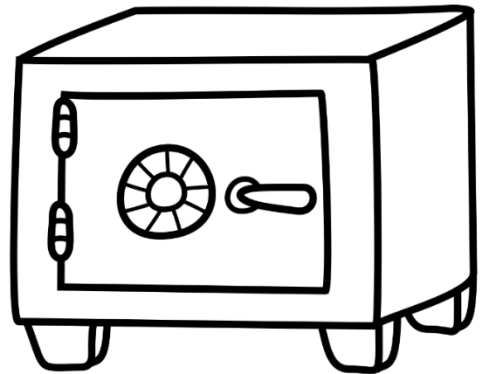
/f/

Note to SLP: Minimal pairs are accent dependent. You should decide which words will work for your student before beginning practice.



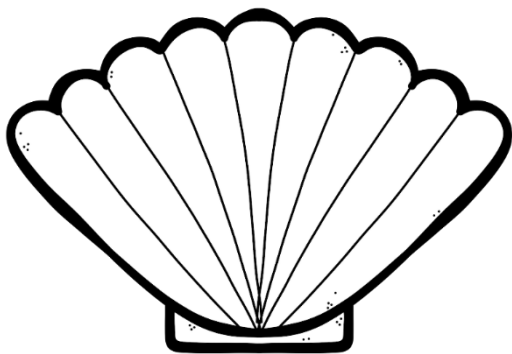
say

Final Consonant Deletion /f/



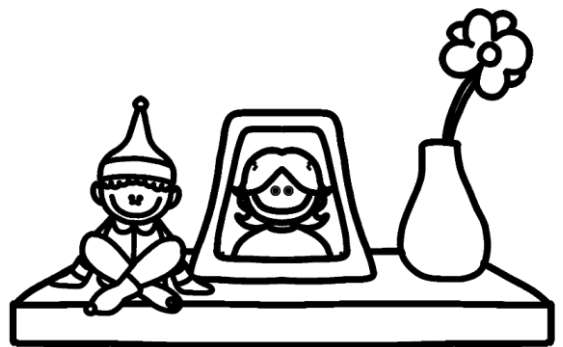
safe

Final Consonant Deletion /f/



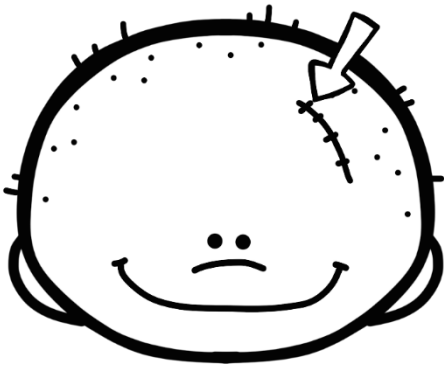
shell

Final Consonant Deletion /f/



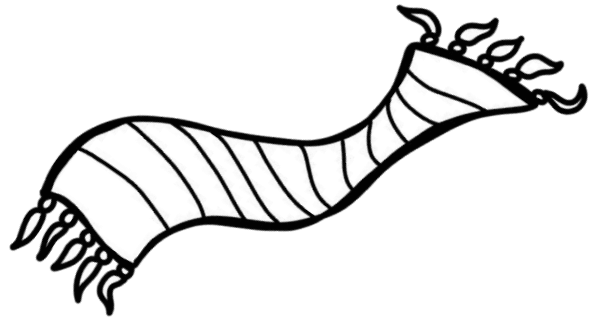
shelf

Final Consonant Deletion /f/



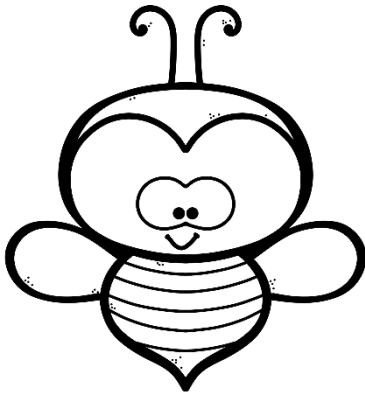
scar

Final Consonant Deletion /f/



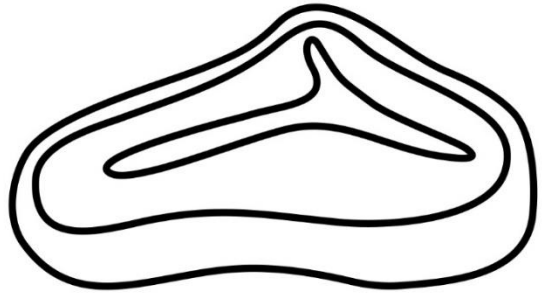
scarf

Final Consonant Deletion /f/



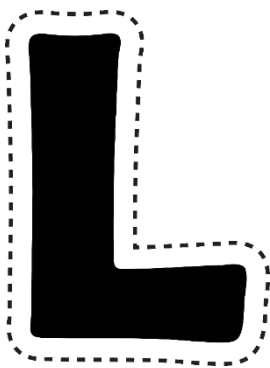
bee

Final Consonant Deletion /f/



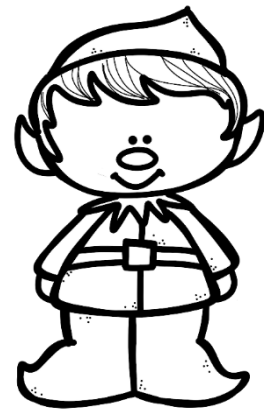
beef

Final Consonant Deletion /f/



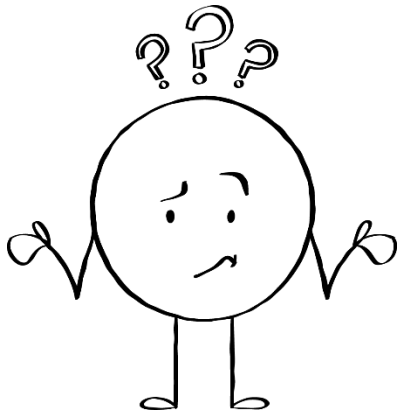
L

Final Consonant Deletion /f/



elf

Final Consonant Deletion /f/



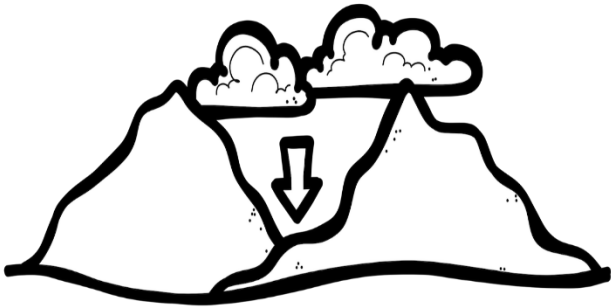
why

Final Consonant Deletion /f/



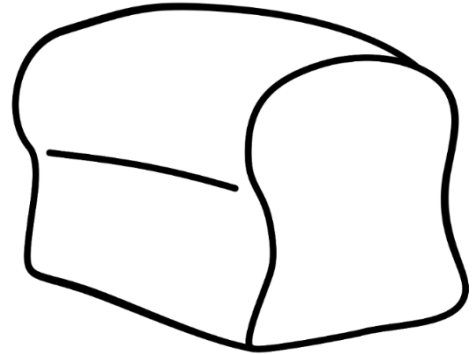
wife

Final Consonant Deletion /f/



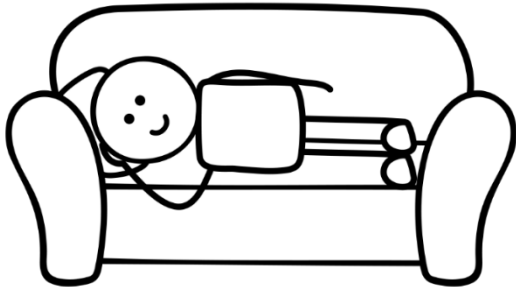
low

Final Consonant Deletion /f/



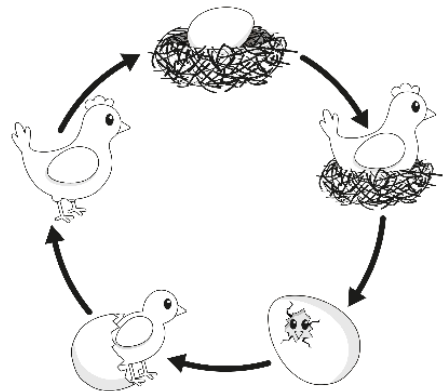
loaf

Final Consonant Deletion /f/



lie

Final Consonant Deletion /f/



life

Final Consonant Deletion /f/