

# Minimal Pairs

## Stopping

/s/ vs. /t/

5 pairs

# Minimal Pairs

Stopping  
/s/ vs. /t/

Note to SLP: Minimal pairs are accent dependent. You should decide which words will work for your student before beginning practice.



tail

Stopping /s/ vs. /t/



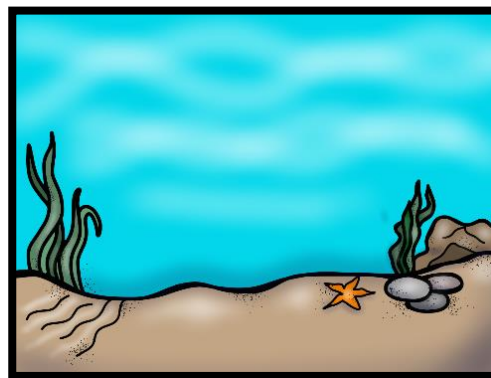
sail

Stopping /s/ vs. /t/



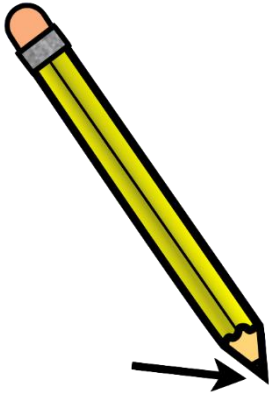
tea

Stopping /s/ vs. /t/



sea

Stopping /s/ vs. /t/



tip

Stopping /s/ vs. /t/



sip

Stopping /s/ vs. /t/



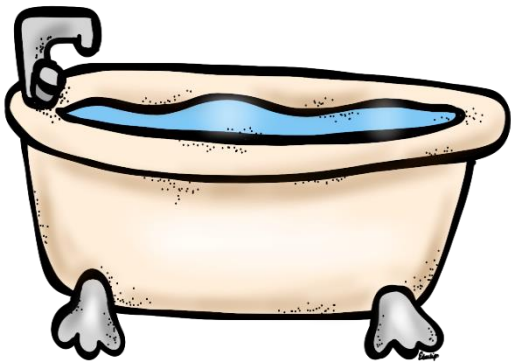
toe

Stopping /s/ vs. /t/



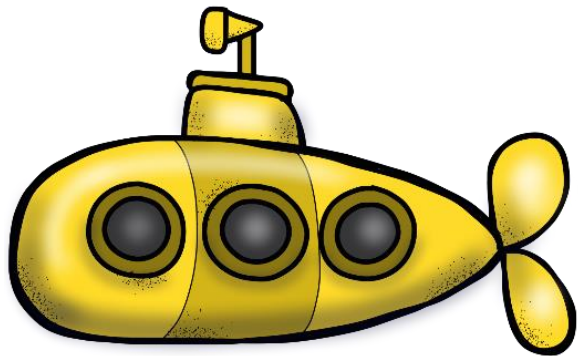
sew

Stopping /s/ vs. /t/



tub

Stopping /s/ vs. /t/



sub

Stopping /s/ vs. /t/

# Minimal Pairs

Stopping  
/s/ vs. /t/

Note to SLP: Minimal pairs are accent dependent. You should decide which words will work for your student before beginning practice.



tail

Stopping /s/ vs. /t/



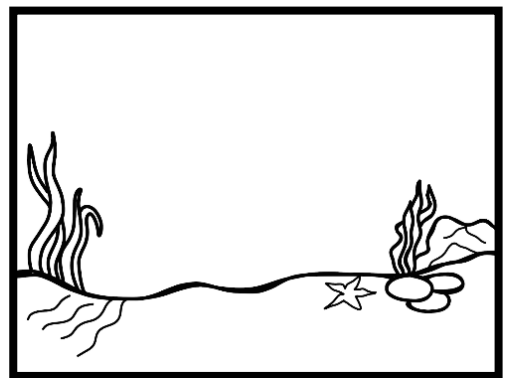
sail

Stopping /s/ vs. /t/



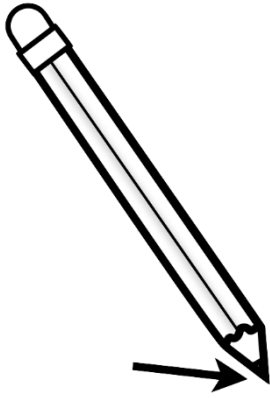
tea

Stopping /s/ vs. /t/



sea

Stopping /s/ vs. /t/



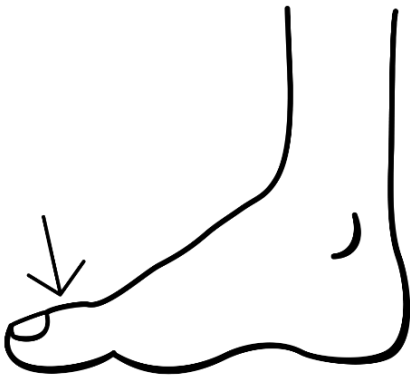
tip

Stopping /s/ vs. /t/



sip

Stopping /s/ vs. /t/



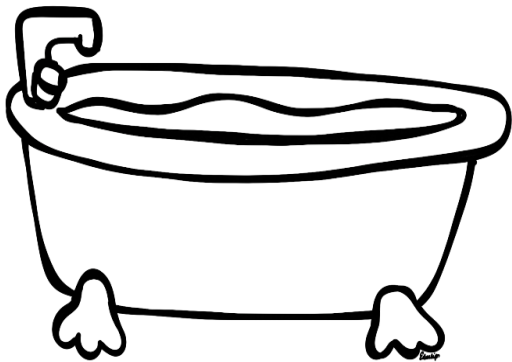
toe

Stopping /s/ vs. /t/



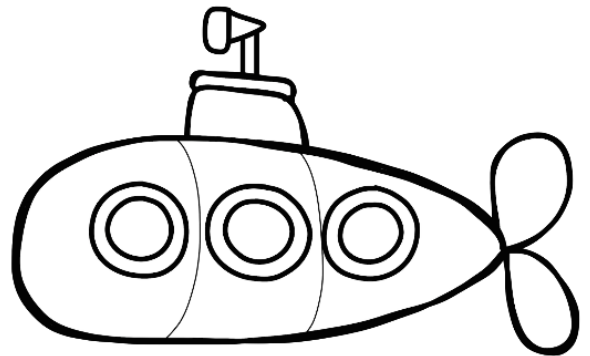
sew

Stopping /s/ vs. /t/



tub

Stopping /s/ vs. /t/



sub

Stopping /s/ vs. /t/